



**AMERICAN SPECIALTIES, INC.**

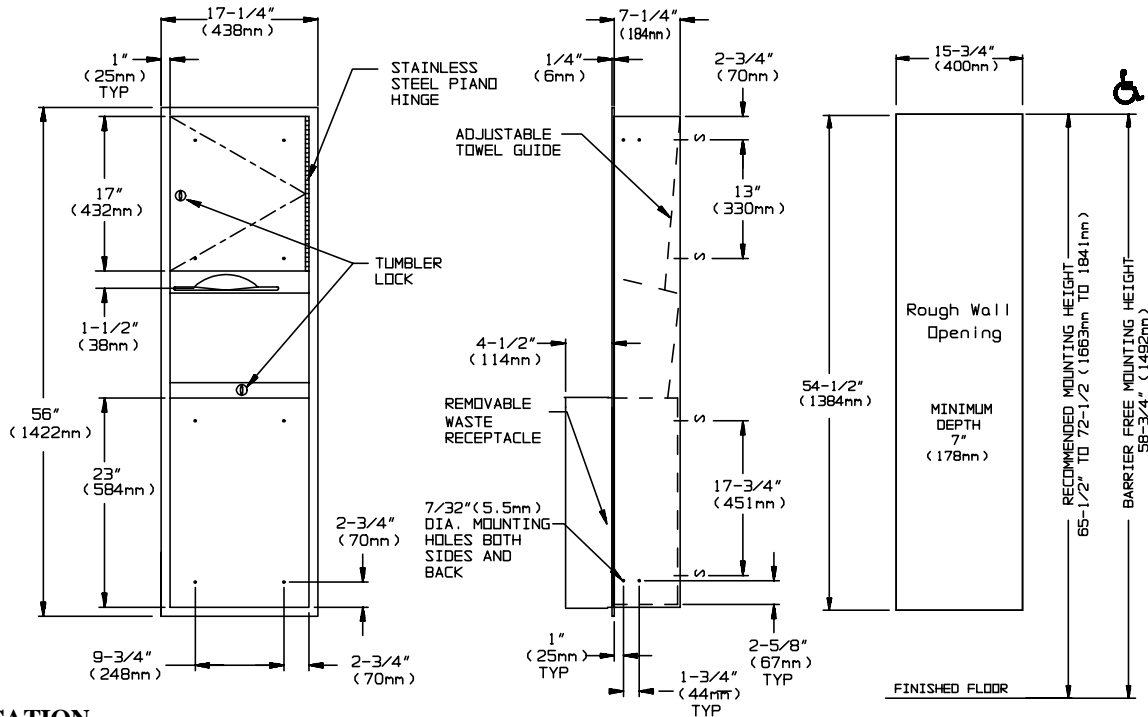
441 Saw Mill River Road, Yonkers, NY 10701 (914) 476-9000

MODEL No: 04697-BL

ISSUED: 1-87

REVISED: 9-04

**RECESSED PAPER TOWEL DISPENSER AND WASTE RECEPTACLE**



**SPECIFICATION**

Recessed Paper Towel Dispenser and Waste Receptacle shall hold and dispense 800 standard multi-fold or 600 standard C-fold paper towels or 1100 standard single fold towels and shall have a waste capacity of 18gal (68litres). Towel dispenser, door, frame, waste container and cabinet shall be fabricated of alloy 18-8 stainless steel, type 304, 22 gauge; all exposed surfaces shall have N<sup>o</sup>4 satin finish. Towel dispensing slot shall have a fully hemmed-in rolled edge for snag-free dispensing and user safety. Adjustable guide shall be provided to allow dispensing of multi-fold or C-fold paper towels. Door shall be fabricated in double-pan construction with fiberboard filler and shall be attached to cabinet at side with a full length 3/16" (5mm) dia. stainless steel multi-staked piano hinge and be held closed with a tumbler lock keyed alike to other ASI washroom equipment. Waste container shall have hemmed edges for safety and shall be retained by a tumbler lock keyed alike to other ASI washroom equipment. Face trim shall be 1" (25mm) wide formed from one piece with no mitres, welding or open seams and have 1/4" (6mm) square return to wall. Structural assembly of all components shall be of welded construction.

**Recess Mounted Paper Towel Dispenser and Waste Receptacle Unit shall be Model N<sup>o</sup>04697-BL as manufactured by American Specialties, Inc., 441 Saw Mill River Road, Yonkers, New York 10701-4913**

**INSTALLATION**

Unit is mounted in wall recess using four (4) N<sup>o</sup> 10 self tapping screws (by others) through concealed mounting holes provided. For compliance with ADA Accessibility Guidelines, unit should be installed so that towel dispenser slot is 54" (1372mm) maximum above finished floor (AFF) if clear floor side reach access is provided or 48" (1219mm) maximum AFF if clear floor forward reach access only is provided. Note that top of RWO is 3/4" (19mm) below top of unit.

**Rough Wall Opening (RWO) required is..... 15-3/4"W x 54-1/2"H x 7-1/4"D minimum (400mm x 1384mm x 184mm)**

**OPERATION**

Towels are self-feeding until supply is depleted. Unit may be reloaded with a partial load in-place and will continue to feed properly. Waste container is emptied manually on cycle determined by maintenance needs. Locked compartment prevents unauthorized access.

**OPTIONS AVAILABLE**

See Options section for available combinations of configurations.

**Accessory Specialties**

**AMERICAN DISPENSER**

**Desert Ray Products**

**WATROUS INC.**